

Importing Text Files

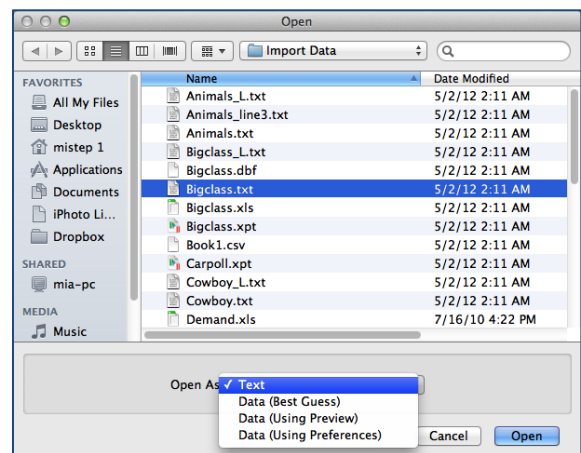
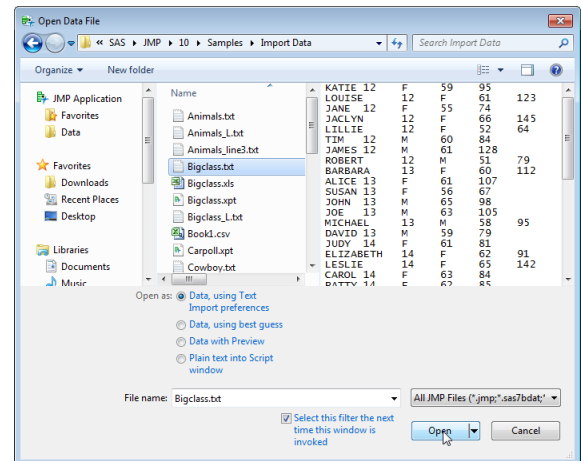
This page gives information on how to import text files (.txt, .csv, .dat, or .tsv) into JMP®. Windows (top) and Mac (bottom) file open windows are displayed, and Mac OS differences are noted.

Importing Data from Text Files

1. Select **File > Open**.
2. Navigate to the directory where your files are stored.
3. JMP will display all files recognized – unrecognized files will be grayed out.
4. Select the text file you'd like to import. In Windows, a preview of the file will display.
5. At the bottom of the window choose one of the four import methods next to **Open as**, and click **Open**.

Import Methods:

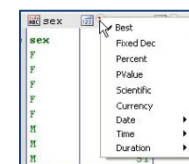
- **Data, using Text Import preferences**, or in Mac, **Data (Using Preferences)**: JMP uses the import rules set in Preferences to open the file. To see or change your preference settings, go to **File > Preferences > Text Data Files**, or in Mac, **JMP > Preferences > Text Data Files**.
- **Data, using best guess**, or in Mac, **Data (Best Guess)**: JMP uses its best guess to import the text file.
- **Data with Preview**, or in Mac, **Data (Using Preview)**: JMP displays a window with the data and options for reading in the data. Additional details are provided below.
- **Plain text into Script window**, or in Mac, **Text**: JMP opens the file in a text-editing window.



Importing data using **Preview**:

- JMP will detect the file's structure and display the appropriate Text Import window. Click the **Delimited Fields** or **Fixed Width Fields** radio button to change the import type.
- Select **Next** to see how your data will look in JMP. From here, you can:
 - Click on a column name to change it.
 - Click on the icon next to each column name to toggle between Numeric, Character and Exclude.
 - Select a format for numeric columns by clicking on the red triangle next to the column name.

| name | age | sex | height | weight |
|--------|-----|-----|--------|--------|
| KATIE | 12 | F | 59 | 95 |
| LOUISE | 12 | F | 61 | 123 |



- Select **Import** at the bottom of the window when you're ready to import the data into JMP.

Note: For more details, see the book **Using JMP** (under **Help > Books**).