

Tutorial for Opening SAS

This is the tutorial notes for *STAT 350, Spring 2010*. The materials are prepared by Xuanyao He.

Start SAS system and get familiar with the menu (on an itap machine)

SAS system is preloaded at all Itap machine. Use the following steps, you will find the interface of SAS system:

Start->All Programs->SAS 9.2 (English)

If the SAS system has not started, you may need to preload the "Microsoft Application Virtualization Desktop Client" by the following steps

Use windows explorer and locate the following directory

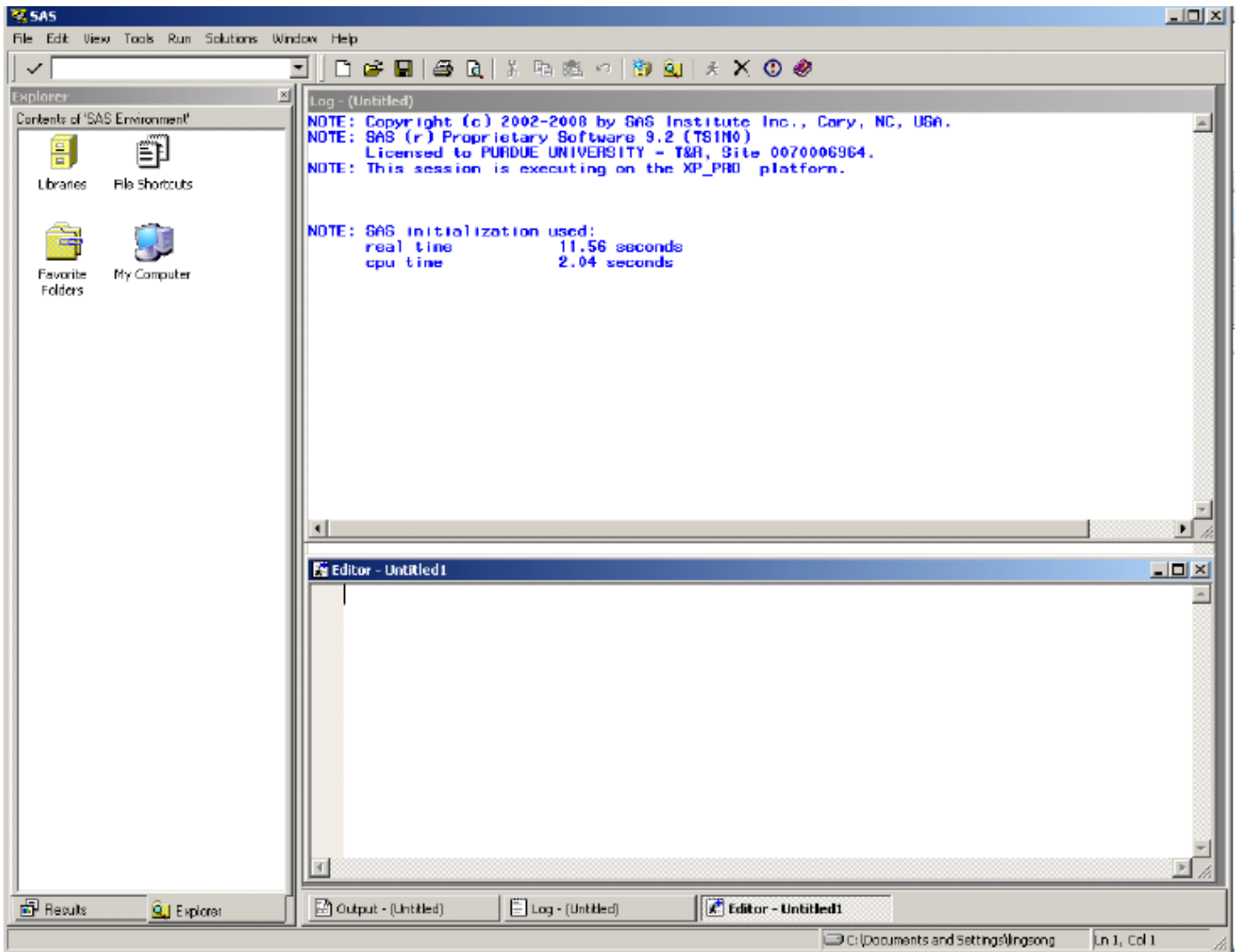
C:\Program Files\Softtricity\SoftGrid for Windows Desktops

Click the program **sftray.exe**, and then start SAS 9.2 using the same procedure

You will see the following interface when you start the SAS system

This is the initial window of the SAS system.

Note that we have several important subwindows within this system.



1. Explorer: place to locate your SAS data sets, programs and other files. Note that this is not windows explorer. So the directory is not the same as in Windows system. This is a logical library to show where your files are.
2. Results: the place to locate all your results when you submit your codes, it contains all results in different formats (if specified) and graphics.
3. Output: is the place to output and low-resolution graphics
4. Log: to record what you have submit, errors and warnings. Usually those error messages are not helpful, but definitely indicate that you need to correct some mistakes in your codes
5. Editor: the place to input all your codes.