

# BIOMETRIC BULLETIN

International Biometric Society Internationale Biometrische Gesellschaft Société International de Biométrie  
 "Biometry, the active pursuit of biological knowledge by quantitative methods." - R.A. Fisher, 1948

## President's Corner



### Greetings

It is important to start by thanking Kaye Basford. She was an outstanding President and Vice-President and made major contributions for successful running of both IBC2010 and IBC2012 and in the implementation of the New Governance system. She is now the Chair of the Nominating Committee and Chair of the Club of Presidents.

For those who missed the last issue of the *Biometric Bulletin*, we welcomed John Hinde (BIR) as incoming Vice-President. He will be President for 2014 and 2015 and then Outgoing Vice-President in 2016. He is interested in making the new governance structures work, providing a more democratic and accountable governance of our Society while focusing on the core aims of our Society, namely our scientific and educational activities. He also would like to improve communication and dissemination of scientific work in biometry and to attract young members to our Society. He has already started working hard for the Society.

The New Governance system formally took effect on 1 January 2013 and the Executive Committee was replaced by the Executive Board with 15 members (three Officers and 12 Directors, see <http://www.biometricsociety.org/about/leadership/>), while the old Council was substituted by the Representative Council. All governance documentation is available on the IBS website in the "Members Only" section and details are given in an article by Kaye Basford in June' issue of *Biometrics*. The

newly elected Executive Board of IBS held its first meeting in Freiburg, Germany, 16 – 17 March 2013, in conjunction with the DAGStat meeting (<http://dagstat2013.uni-freiburg.de>). At this meeting, the Executive Board will discuss strategic plans for the Society and proposals brought by the committees and other sources. One of the aims is to provide information and recommendations back to our Standing Committees. The Deutsche Arbeitsgemeinschaft Statistik (DAGStat) is a network of 15 scientific and professional organizations that develop and promote statistical theory and methodology. This network is an excellent example of cooperation between National Societies.

The Representative Council has Andrea Berghold (Austro-Swiss Region) as new Chair. I would like to congratulate Andrea and thank Andreas Zeigler (German Region) who was elected to be a Director of the Executive Board. The first task for the Representative Council will be to elect the six members of the Nominating Committee. The Nominating Committee shall be responsible for proposing a slate of candidates to serve as the officers and executive board members.

I take this opportunity to thank the retiring members of the previous Executive Committee, Kaye Basford (Past President, AR), Peter Njuho (South Africa Region) and Urania Dafni (EMR), for their dedication to IBS. I would also like to thank the members of the previous Council for their service and for agreeing to extend their terms during the transition period, those who finished their term in the Standing Committees, and the members of the previous Nominating Committee chaired by the past President Andrew Mead (BIR).

## IN THIS ISSUE

President's Corner .....	1
From the Editor .....	2
Region Key .....	2
Biometrics .....	3
JABES .....	4
Region News .....	5
Australasian Region .....	5
Austrian-Swiss .....	6
Brazilian Region .....	7
British and Irish Region .....	7
Eastern North American Region ..	7
German Region .....	8
Japanese Region .....	9
Pakistan Region .....	9
Western North American Region ..	9
Announcements and News .....	10
Meetings .....	12

Adriano Decarli (Italian Region), Chair of the Local Committee, Brian Cullis (AR), Chair of the International Program Committee, Krista Fischer (Nordic-Baltic Region), Chair of the Education Committee, and their committees have started preparations for the IBC2014 in Florence, Italy, 6 – 11 July 2014, organized jointly by the Italy and EMR. Some details can be found in the conference website <http://www.ibs-italy.info/> while calls for Invited Session proposals and Short Courses have been circulated.

I take this opportunity to invite you to celebrate 2013 as the International Year of Statistics. The latest International Year of Statistics newsletter is available at <http://www.statistics2013.org/files/2013/02/>

*Continued on p. 4*

## BIOMETRIC BULLETIN

ISSN 8750-0434  
Copyright © 2011

International Biometric Society

Biometric Bulletin is published four times a year in March, June, September and December for US\$40 per year by the International Biometric Society

1444 I Street NW, Suite 700 • Washington, DC 20005-6542 USA

Telephone: +1(202) 712-9049 • Fax: +1 (202) 216-9646

Email: <ibs@tibs.org> • Website: <http://www.biometricsociety.org>

The Biometric Bulletin is available to members of the Society as part of their annual dues. The views of contributions to this publication should not be ascribed to the International Biometric Society. Reproduction for commercial purposes is allowed if the source is acknowledged.

### Editor

Dimitris Karlis, Dept. of Statistics, Athens University of Economics & Business, e-mail: <karlis@aueb.gr>

### Region, Group and Network Correspondents

Liesbeth de Wreede (ANed), Sally Galbraith (AR), Richard Emley (BIR), Hein Putter (Channel Network), Axel Benner (DR), Dimitris Karlis (EMR), Leslie McClure (ENAR), Mamadou Diedhiou (GEth), Olayemi Oluwasoga (GNi), Zofia Hanusz (GPol), Cornelia Enachesu (GRo), Peter M. Njuho (GSAf), Wellington Mushayi (GZim), Babu L. Verma (IR), Satoshi Hattori (JR), Esa Läärä (NR), Cecilia Bruno (RARg), Sophie Vanbelle (RBe), Luzia Aparecida Trinca (RBras), Novie Younger (RCAC), Anabel Forte (REsp), Robert Fairve (RF), Stefano Salvadori (RIt), Seung-Ho Kang (Rko), Andrea Berghold (ROeS), Henry G. Mwambi (SUSAN), Megan Othus (WNAR), Jialiang Li (SING), Dan Kajungu (UGan), Agnes Ankamah (GSha), John Mwangi (GKe), Njoku Ama (GBot), Innocent Zebaze (GCam), Cristian Meza (GCI), Katja Ickstadt (CEN), Alia Sajjad (PKSTAN), Andrew Zhou (CHINA).

### International Biometric Society Officers

President: Clarice G.B. Demétrio, Departamento de Ciências Exatas, Escola Superior de Agricultura "Luiz de Queiroz," Universidade de São Paulo, 13418-900 Piracicaba, SP, Brasil. Phone +55 19 34294144 R216, Email: <clarice@esalq.usp.br >

Vice President: Kaye E. Basford, School of Land and Food Sciences, University of Queensland, Brisbane QLD 4072 Australia, Tel: 61 7 33652810, Fax: 61 7 33651177, Email: <k.e.basford@uq.edu.au>

Secretary-Treasurer: Linda J. Young, University of Florida, Department of Statistics, IFAS, P.O. Box 110339, Gainesville, FL 32611, USA, Tel: +352-392-1941, Fax: +352-392-8555, Email: <LJ.Young@ufl.edu>

Editorial Representative: Urania Dafni, Laboratory of Biostatistics, Department of Nursing, University of Athens, 123 Papadriamantopoulou St., 11527 Goudi, Greece, Tel: +1-30-210-7461456, Fax: +1-30-210-7461489, Email: <udafni@nurs.uoa.gr>

Educational Representative: Peter M. Njuho, HIV/AIDS, STIs and TB, Human Sciences Research Council (HSRC), 750 Francois Road, Cato Manor, Durban, 4001, South Africa, Tel: +27-(0)31-2425632, Fax: +27-(0)31-2425401, Email: <pnjuho@hsrc.ac.za>

### Editors of Biometrics

Jeremy M.G. Taylor, University of Michigan, 1415 Washington Heights, M4509 Sph li, Ann Arbor, MI 48109-2007, Tel: (734) 936-3287, Email: <jmgt@umich.edu>

Jeanine J. Houwing-Duistermaat, Department of Medical Statistics and Bioinformatics, Leiden University Medical Centre, Postzone S-05-P, P.O. Box 9600, 2300 RC Leiden, The Netherlands, Tel: 31-71-5269707, Email: <j.j.houwing@lumc.nl>

Russell Millar, University of Auckland, Department of Statistics, Private Bag 92019, Auckland, New Zealand 1142, Tel: + 64 9 373 7599 ext. 85003, Email: <r.millar@auckland.ac.nz>

Marie Davidian (Executive Editor), North Carolina State University, Department of Statistics, Box 8203, Raleigh, NC 27695-8203, USA, Tel: +1-919-515-1940, Fax: +1-919-515-7591, E-mail: <davidian@ncsu.edu>

### Editor of Journal of Agricultural, Biological and Environmental Statistics (JABES)

Montserrat (Montse) Fuentes, North Carolina State University, Department of Statistics, Box 8203, Raleigh, NC, 27695, USA, Tel: +1-919-515-1921, Fax: +1-919-515-1169, Email: <fuentes@ncsu.edu>

### International Business Office

Executive Director: Dee Ann Walker, CAE

Director of Education: Alphonsus Baggett, MED

Director, Membership & Marketing: Lisette Werbowetski

Coordinator, Membership: Melissa Mays

## From the Editor

Dear Readers,

This is my first piece as the new editor of *Biometric Bulletin*. Introducing myself, I shall say that I am Associate Professor of Statistics in the Dept of Statistics, Athens University of Economics. My interests beyond biostatistics include multivariate count data, copulas, and discrete valued time series. I belong to the Eastern Mediterranean Region (EMR) of IBS, a region with members from nine countries spanning three continents: Bulgaria, Cyprus, Egypt, Greece, Israel, Jordan, Saudi Arabia, The Palestinian Authority and Turkey. This area has been a crossroad of civilizations and religions and I think our region is an important example of scientific cooperation beyond conflicts and stereotypes.

As a starting point, I would like to greet everybody and sincerely thank the outgoing editor Roslyn Stone for her excellent work in the last four years as well as for her kindness and help for this transition. My enthusiasm for this new activity is huge. I have been publicity officer and Bulletin correspondent of EMR for six years and I found this exiting as it was the outreach of all of us related to IBS. News from different families/regions were gathered together to create the big family of IBS. I hope that I will help to make the *Biometric Bulletin* the place where news worldwide will be gathered and disseminated promptly. My belief is that in addition to its useful informative nature, the *Biometric Bulletin* provides IBS members with a sense of participation in the broader Biometrics scientific community.

As a first issue of this year there are a lot of changes about incoming and outgoing officers and a New Governance System. Good luck to all the incomers (including me) and many thanks to the outgoing ones. Also 2013 is the International Year of Statistics and IBS plays an important role on this. I also would like to welcome Leslie McClure, the new correspondent for ENAR, and convey a special welcome to Alia Sajjad (Pakistan), the first correspondent of the newly created Pakistan Region (PKSTAN).

We are soliciting ideas to broaden the scope and appeal of the *Bulletin*. Suggestions from the Correspondents, Regional Officers as well as *Biometric Bulletin* readers on how to improve the Bulletin are welcome at [karlis@aueb.gr](mailto:karlis@aueb.gr).

**My warmest regards,  
Dimitris Karlis**

## SAVE THE DATES

**XXVIIth International  
Biometric Conference  
6 – 11 July 2013  
Florence, Italy**

### Region Key

#### Regions

RArg - Argentinean Region

AR - Australasian Region

ROeS - Austro-Swiss Region

RBe - Belgian Region

RBras - Brazilian Region

BIR - British and Irish Region

RCAC - Central American-Caribbean Region

EMR - Eastern Mediterranean Region

ENAR - Eastern North American Region

RF - French Region

DR - German Region

IR - Indian Region

RItI - Italian Region

JR - Japanese Region

RKo - Korean Region

ANed - The Netherlands Region

NR - Nordic Baltic Region

SING - Singapore

REsp - Spanish Region

WNAR - Western North American Region

GBot - Botswana

GCam - Cameroon

(GCI) - Chile

CHINA - China

GEth - Ethiopia

GGha - Ghana

GKe - Kenya

GNi - Nigeria

PKSTAN - Pakistan

GPol - Poland

GRo - Romania

GSAf - South Africa

UGan - Uganda

GZim - Zimbabwe

#### Networks

CEN - Central European Network

Channel Network

SUSAN - Sub-Saharan Network

# Biometrics

## June 2013 Issue Highlights

The lead articles in the June issue are a summary of IBS President Clarice Demetrio's Presidential Address at the 2012 IBC in Kobe, Japan, and a brief follow-up to Past President Kaye Basford's Presidential Address summary, which appeared in the December 2011 issue.

The June issue includes articles covering a diverse array of methodological areas and applications. The Biometric Methodology section features "Design and estimation for evaluating principal surrogate markers in vaccine trials" by Ying Huang, Peter B. Gilbert, and Julian Wolfson; "Partly conditional estimation of the effect of a time-dependent factor in the presence of dependent censoring" by Qi Gong and Douglas E. Schaubel; "Joint high-dimensional Bayesian variable and covariance selection with an application to eQTL analysis" by Anindya Bhadra and Bani K. Mallick; and "A strategy for Bayesian inference for computationally expensive models with application to the estimation of stem cell properties" by A. M. Overstall and D. C. Woods.

The Biometric Practice section includes "Distributed lag models for hydrological data" by Alastair M. Rushworth, Adrian W. Bowman, Mark J. Brewer and Simon J. Langan; "A Bayesian goodness of fit test and semiparametric generalization of logistic regression with measurement data" by Angela Schorgendorfer, Adam Branscum, and Timothy Hanson; and "A revisit to sample size and power calculations for testing odds ratio in two independent binomials" by Fang Liu.

As always, lists of papers to appear can be found at the *Biometrics* website. Papers to appear in future issues may also be found under the "Early View" link at the Wiley-Blackwell website, which may be accessed by IBS members by visiting <http://www.biometricsociety.org/>, selecting "Biometrics" from the drop-down menu at the "Publications" link at the top of the page, and accessing the "Click here" link.

## Report of the Editors Highlights

As usual, the March 2013 issue contains as the lead article the "Report of the Editors - 2012", which presents journal statistics for 2012. Some highlights from the Report are the following:

**New Submissions.** *Biometrics* received 551 new submissions to the Biometric Methodology and Biometric Practice sections of *Biometrics* in 2012, plus 6 Reader Reaction articles and 2 Letters to the Editors. The 551 new submissions represent a decrease from the past two years, in which 625 (2011) and 602 (2010) new papers were received. Reasons for the drop in submissions are not readily apparent.

**Geographic Distribution of Submissions.** The 551 submissions came from 35 countries/districts (based on the country of the corresponding author). Of these, 59.0% were from the US, 5.3% from Canada, 5.3% from PR. China, 5.1% from the United Kingdom, 2.2% from France, and 2.0% from each of Australia and Italy.

**Types of Submissions Published.** In 2012, *Biometrics* published 89 *Biometrics* Methodology papers, 41 *Biometrics* Practice papers, 1 Reader Reaction paper, and 2 Letters to the Editors. Among these, 2 of the *Biometric* Practice papers were Discussion papers; 1 Discussion paper was published in the *Biometrics* Methodology section.

More information is available in the full report.

## Editorial Board News

Co-Editor Russell Millar's term will end 31 December 2013.

Following IBS policy, a search committee has been constituted to identify Dr. Millar's successor. According to geographic convention, the new Co-Editor will reside outside of Europe or North America. The committee members are Marie Davidian (ENAR, *Biometrics* Executive Editor), Chair; David Zucker (EMR, former *Biometrics* Co-Editor); Byron Morgan (BIR, EAC member and former *Biometrics* Editor), Paulo Ribeiro (Brazilian Region, EAC member and *Biometrics* Associate Editor (AE)), Jeanine Houwing-Duistermaat (Dutch Region, *Biometrics* Co-Editor), Russell Millar (Australasian Region, *Biometrics* Co-Editor); and Jeremy Taylor (ENAR, *Biometrics* Co-Editor). The nominee selected by the committee will be subject to approval through the IBS governance structure. An email requesting recommendations was sent to the members of IBS in February. The result of the search will be reported in a future column.

AEs for *Biometrics* serve two-year, renewable terms that start on 1 July of each year. Each year, roughly half of the AEs have terms ending on 30 June; accordingly, each spring, the Co-Editors review the expertise of the current AEs and submission trends with an eye toward possibly bringing on new AEs with expertise that is underrepresented or may be lost by AE retirements. The Co-Editors welcome suggestions from the members of IBS regarding individuals who may be excellent choices to serve as AEs. Please send suggestions, along with a CV or URL where the individual's qualifications may be found, to the journal Editorial Manager, Ms. Ann Hanhart, at [biometrics@tibs.org](mailto:biometrics@tibs.org). Self-nominations also will be considered.

## "Virtual Issue" of Biometrics Now Available

Our publisher, Wiley-Blackwell, is recognizing the International Year of Statistics through a number of promotions, including posting freely accessible "virtual issues" of its statistics journals. As we reported earlier, the Co-Editors have created a virtual issue featuring some of the most highly cited *Biometrics* papers from the past decade, along with papers receiving awards for the Best Paper by an IBS Member since the inception of this award. The virtual issue is accessible from the main *Biometrics* Wiley Online Library webpage; click on the "Classic Journal Content" link.

The publisher has also created a "Statistics Cluster" virtual issue featuring papers from all journals in its statistics portfolio. This issue may be accessed from the *Biometrics* Wiley Online Library webpage by clicking on the "Classic Journal Content" link and then on "Celebrate the International Year of Statistics with Wiley" banner right above the *Biometrics* virtual issue.

## Biometrics Showcase Sessions

A reminder that an Invited *Biometrics* Showcase Session will be held at the Joint Statistical Meetings in Montréal, Québec, Canada, 3 - 8 August 2013. Three recent *Biometrics* papers will be presented. The first is a Discussion paper appearing in the September 2012 issue, the second is an invited discussion of that paper; and the third is the winner of the award for Best Paper Published in *Biometrics* by an IBS Member for 2011; speakers are indicated by an asterisk (\*): "Bayesian effect estimation accounting for adjustment uncertainty" by Chi Wang, Giovanni Parmigiani\* and Francesca Dominici; "Analyses that inform policy decision" by Roee Gutman\* and Donald Rubin; and "Detecting disease outbreaks using local spatiotemporal methods" by Yingqi Zhao\*, Donglin Zeng, Amy Herring, Amy Ising, Anna Waller, David Richardson and Michael Kosorok. The session will be held on Sunday, 4 August from 2:00 - 3:50 pm.

# Journal of Agricultural, Biological, and Environmental Statistics (JABES) Editor Report

IBS January 2013

2013 brings many new and noteworthy happenings for the Journal of Agricultural, Biological and Environmental Statistics (JABES).

## New AE

We are pleased to announce the addition of a new AE joining the team, Mario F. D'Antuono, Senior Biometrician, Grains Industry, Department of Agriculture and Food, Western Australia. Mario's expertise lies in design and analysis of experiments in agriculture, which includes plant and animal sciences as well as statistical analysis of data arising from plant and/or animal experiments using ASREML-R and GenStat software in fitting linear mixed models. He will be a strong addition to the agriculture component of JABES. We strive to emphasize and promote the specific fields our journal supports; agriculture, biological sciences and environmental sciences and the related statistical research.

## Issue Highlights

Our December issue featured numerous strong papers. One of these papers is Souparno Ghosh, Alan Gelfand, and James S. Clark's discussion paper "Inference for size demography from point pattern data using integral projection models". Population dynamics with regard to evolution of traits typically has been studied using matrix projection models. Recently, to work with continuous traits, integral projection models (IPMs) have been proposed. Fitting these models has so far been done only with individual-level transition data, which is used to estimate the demographic functions that are part of the IPM specification. Such an approach fails to connect estimated trait distributions over time with corresponding observed distributions. The authors address this issue by focusing on size distributions. In this paper they view size distribution at a given time as a point pattern over a bounded interval. Building a three-stage hierarchical model driven by a deterministic IPM the authors explain the observed point patterns. Such modeling enables full inference about all features of the model. Exact model fitting is very computationally challenging; they offer approximate strategies to facilitate computation. Ghosh, Gelfand and Clark illustrate the methodology with simulated data examples as well as a set of annual tree growth data from Duke Forest in North Carolina. Three discussions to this paper are written by Sudipto Banerjee (with coauthor Rajarshi Guhaniyogi), Stephen P. Ellner and Mevin Hooten, and a responding rejoinder from the authors will be available as well.

Other manuscripts in the December issue include "Bayes inference for a tractable new class of non-symmetric distributions for 3-dimensional rotations" by Melissa Bingham, "A multivariate hidden Markov model for the identification of sea regimes from incomplete skewed and circular time series" by F. Lagona, "Bayes factor based on a maximum statistic for case-control genetic association studies" by Gang Zheng, "Estimating the number of genes that are differentially expressed in both of two independent experiments" by Megan Orr, "A Bayesian approach to fitting Gibbs processes with temporal random effects" by Ruth King, and "Uncertainty analysis for computationally expensive models with multiple outputs" by David Ruppert. Each of these manuscripts brings a uniqueness and complexity to the journal, which many should look forward to reading. As a whole JABES continues to bring new innovative topics, people, manuscripts,

and discussions to light in a world where agricultural, biological, and environmental statistics become more important every day.

## Special Issue on Big Data

JABES has a special issue planned for September of this year, co-edited by Scott H. Holan, Mevin B. Hooten and Christopher K. Wikle called "Modern dimension reduction methods for big data problems in ecology". The National Science Foundation and others have recently used the term "Big Data" to refer to large and complex datasets typically generated from digital sources such as instruments, sensors, images and video. In general, these voluminous datasets are difficult to analyze using conventional statistical methodology. One area that has experienced an explosion of "Big Data" problems over the past decade is ecological science. More specifically, the National Ecological Observatory Network (NEON) and ever-increasing technological advances have produced terabytes of data that hold the keys to addressing a myriad of ecological questions, many occurring over space and time. Tackling these problems requires a diverse set of statistical modeling tools involving modern dimension reduction methods. This unified special issue will showcase papers from leading experts in statistical ecology working on dimension reduction techniques for "Big Data." Collectively this special issue will provide a valuable resource for ecological modelers and statisticians. Authors for this special issue include Jim Clark, Andy Findley, Alan Gelfand, Scott Holan, Mevin Hooten, Devin Johnson, David Warton, Chris Wikle, Jay Ver Hoef, and Jun Zhu. This special issue will be featured in an invited session at JSM 2013. The hard work of the guest editors to recruit quality authors and manuscripts makes the JABES special issues an integral part of the journal's success.

## JABES Session at ENAR 2013 Meeting

At ENAR 2013 4 authors (David Ruppert, Alan Gelfand, Andrew Finley, and Candace Berrett) presented their respective papers in a special JABES session. The JABES showcase was on Tuesday, 12 March 2013.

Thank you for your support of JABES and please continue submitting your work!

**Montse Fuentes**  
Editor in Chief

---

## Presidents Corner

*Continued from p. 1*

February-11-2013.pdf. Past newsletters can be reviewed at <http://www.statistics2013.org/participant-newsletter-archive/>.

Finally, I would like to urge you to start planning to participate in the coming IBC2014, in Florence, Italy, 6 - 11 July 2014.

**Clarice Garcia Borges Demétrio**  
[clarice.demetrio@usp.br](mailto:clarice.demetrio@usp.br)

# Region & National Group News

## Australasian Region (AR)

### New Australasian Region President

We welcome David Baird as the new president of the Australasian Region. Outgoing president Mario D'Antuono made the official handover at the Australasian Applied Statistics Conference in Queenstown, New Zealand, in December 2012 (see photo). To quote David: "I am sure I won't be able to fill the large and flamboyant shoes of Mario, but have been quietly involved in the IBS for the last 25 years. During this time, I've helped run 3 conferences and been a representative on the International Council". We are sure David will be an excellent president and wish him all the best for his term. Also, our sincere thanks go to Mario for his flamboyancy, dedication and hard work (not quite finished yet since he is helping to organise IBS-AR 2013 described below).



*Incoming IBS-AR president David Baird (left) is congratulated by outgoing president Mario D'Antuono (right) at AASC 2012 in Queenstown, December 2012*

### Australasian Applied Statistics Conference (AASC), Queenstown, December 2012

AASC 2012 attracted many IBS-AR members to beautiful Queenstown, New Zealand, last December. Participants from Africa, Europe, Asia and America joined locals on the delegate list of over 100 people. Pre-conference workshops on Mixed Models for Non-Normal Data (Roger Payne), Computer Generation of Experimental Designs (Emlyn Williams and others) and Modern Applications of Linear Mixed Models in Case Studies (Brian Cullis and Sue Welham) kicked off a scientific programme featuring 9 invited speakers, a special session on the analysis of data generated by high-throughput biotechnologies, a wide range of contributed talks, and a large number of high-quality posters. A prize for the best poster was awarded to Peter Alspach (Validation of a breeding strategy for selection of machine-harvested raspberries). Zoé van Havre was runner up (Investigating the number of components in overfitted Gaussian mixture models). Congratulations to Peter and Zoé!



*The LOC for AASC 2012: L to R: Chris Triggs, David Baird, Andrew McLachlan, Yvonne McDiarmid, Duncan Hedderley and Ruth Butler*

It was especially good to see many young statisticians in attendance. In the words of one, Aaron Bryant, "The talks and posters were both of a very high standard and I came away with a head full of new information and inspired by all the different things other statisticians are doing. Thank you to Ruth Butler and her team for organizing such a great conference in an awesome location". We second the thanks to the Local Organising Committee: Chris Triggs, David Baird, Andrew McLachlan, Yvonne McDiarmid, Duncan Hedderley and Ruth Butler; and look forward to AASC 2014 in South Australia.

### Young Statisticians Conference (YSC) 2013

*(report by Sandy Clarke, The University of Melbourne)*

YSC 2013 was held at Trinity College at the University of Melbourne on 7 - 8 February 2013. Over 100 young statisticians from Australia and beyond were entertained by the four engaging keynote speakers (Professor Rob Hyndman from Monash University, Professor Ray Chambers from the University of Wollongong, Professor John Croucher from Macquarie University and Professor Peter Hall from the University of Melbourne) as well as other invited speakers and panel members from industry and academia. These were complemented by the high standard of the contributed talks and posters from young statisticians themselves. The conference provided a great opportunity to network with other young statisticians who took full advantage of the social activities, including a lively conference dinner. Preceding the conference were two excellent R workshops from Professor Thomas Lumley from the University of Auckland. The conference and the workshops were well supported by the SSAI, generous academic and industry sponsors, and an enthusiastic organising committee. Encouraging signs for the future of statistics in Australia and many reasons to look forward to YSC2015!



*The LOC for AASC 2012: L to R: Chris Triggs, David Baird, Andrew McLachlan, Yvonne McDiarmid, Duncan Hedderley and Ruth Butler*

### **Workshop on Joint Models for Longitudinal and Survival Data II – 12 April 2013**

The workshop "An Introduction to Joint Models for Longitudinal and Survival Data with Applications in R" will be presented by Dr Dimitris Rizopoulos, Assistant Professor at the Department of Biostatistics of the Erasmus University Medical Center in the Netherlands. Organised by The George Institute for Global Health and Macquarie University, the workshop will be held on 11 - 12 April 2013 at Macquarie Park Executive Conference Centre, Macquarie University. For further information visit <http://www.statsoc.org.au/CPD44MainPage>.

### **Ecology and Statistics Symposium II – 12 July 2013**

The Eco-Stats group at The University of New South Wales will host the symposium "New Opportunities at the Interface between Ecology and Statistics" on 11 - 12 July 2013. Ecologists and statisticians have much to gain from working together, and the symposium will provide such an opportunity. World leaders from ecology and statistics will pair up to present their own perspectives on topical issues, such as modern methods for modeling species distributions, approaches for finding patterns in multi-species data, and applications of maximum entropy estimation. Round-table discussions will provide opportunities for interdisciplinary collaboration. The symposium has been designed as a collaborative forum for researchers with interests in ecology, statistics, or both. Invited speakers include Trevor Hastie (Stanford University, US), Bill Shipley (University of Sherbrooke, Canada), Noel Cressie (University of Wollongong, Australia) and Adrian Baddeley (CSIRO and The University of Western Australia). For more details, visit <http://www.eco-stats.unsw.edu.au/symposium.html>.

### **Australasian Epidemiological Association (AEA) Conference**

The 2013 conference of the Australasian Epidemiological Association will be held at the Brisbane Convention and Exhibition Centre in Queensland 20 - 22 October 2013. The conference theme, a "Life Course Approach to Health and Wellbeing", is concerned with investigating the role of biological, behavioural and psychosocial processes that link adult health and disease risk to physical and social exposures acting during life or across generations. The conference will provide an opportunity to discuss and exchange ideas and findings in this important and emerging field. Topics will include epidemiological methods, life stages, nutrition, physical activity and more. For further details, see [www.AEA2013.com](http://www.AEA2013.com).

### **First Announcement: Joint Conference of the NZSA and ORSNZ, November 2013**

The New Zealand Statistical Association and the Operations Research Society of New Zealand are holding a joint conference, hosted by the University of Waikato, in the week beginning 25 November 2013. Details will be posted on [www.stats.org.nz](http://www.stats.org.nz).

### **IBS-AR Conference I – 5 December 2013**

Planning is well underway for the next Australasian regional meeting of the International Biometric Society, nicknamed "Biometrics by the Canals". The conference will be held at The Sebel Mandurah Hotel, City of Mandurah (about 70 kilometres south of Perth), from 1-5 December 2013. More information on Mandurah and the Hotel can be found at <http://www.visitmandurah.com> and <http://www.mirvachotels.com/sebel-mandurah>, respectively.

The programme will begin on Sunday 1 December 2013 with registration and a welcome reception in the late afternoon/early evening with the main conference from Monday, 2 December 2013 to Thursday, 5 December 2013. We are planning for a pre-conference workshop/s on Saturday, 30 November 2013 at the same venue.

More details will be posted on our website <http://www.BiometricSociety.org.au>.

**Sally Galbraith**

### **Austrian-Swiss Region (ROeS)**

ROeS 2013 will be held at the Vorarlberg University of Applied Sciences in Dornbirn, Austria from 9 - 12 September 2013. Dornbirn, the largest city in the Austrian State of Vorarlberg, is located in the four-country area of Austria, the Principality of Liechtenstein, Switzerland and Germany. The conference venue features a perfect combination of a picturesque city and an impressive landscape, and good conference facilities (<http://www.roes20xx.at/organization/venue>).

Two pre-seminar courses, Statistical Methods in Dose Finding (Byron Jones, Björn Bornkamp) and Comparing Clinical Measurements (Bendix Carstensen), will be held on Monday morning. One post-seminar course, Group Sequential and Adaptive Design for Confirmatory Trials using East, will be presented by Cyrus Mehta on Thursday

Topics at the conference are: regulatory topics and guidelines, recent advances in time-to-event data, multiregional trials, flexible and adaptive designs, growth curves, risk prediction, statistical methods in genetic epidemiology, applications in genomics, health technology assessment, multistate models – cure models, analysis of registries and large databases, mixed data analysis, statistical methods in infectious disease epidemiology, statistical evaluation of biomarkers and clinical tools, non-clinical statistics.

A session will be presented by Young Statisticians from Slovenia, Italy, Poland, Germany, Switzerland and Austria. On Wednesday, the winner of the Prof. Dr. Arthur Linder Prize will present their research work and receive the award.

Abstract submission is open until 30 April 2013. For more details please visit <http://www.roes20xx.at/>

**Andrea Berghold**

## Brazilian Region (RBras)

The 2013 RBras Meeting will be held from 22 - 26 July 2013 in Campina Grande, Paraíba. It will be a joint meeting with the 15th Symposium of Statistics Applied to Agricultural Sciences (SEAGRO).

The scientific program and other useful information are available on the RBras website <http://www.rbras.org.br/rbras58/>. Registration and paper submission is now open.

The deadline for paper submission is 24 March and early bird registration ends on 31 May 2013. The local committee is chaired by Ricardo Olinda.

The program includes several short courses, conferences and thematic sessions on a wide range of topics. The following invited speakers will be attending the conference: Clarice Demétrio (University of São Paulo); Emmanuel Lesaffre (Catholic University of Leuven); Humber Andrade (Federal Rural University of Pernambuco); Hélio S. Migon (Federal University of Rio de Janeiro); Gauss Cordeiro (Federal University of Pernambuco); John Hinde (National University of Ireland); Adriano De Carli (University of Milan); Adriano Polpo (University Federal of São Carlos); and Caio Santos Coelho (National Institute for Spatial Research). Topics of short courses talked by national and international speakers will cover Bayesian analysis; AMMI models; cumulative damage models; RNAseq models; Bayesian analysis for longitudinal studies; Bayesian analysis for categorical and survival data; non-linear regression; and truncated distributions, many of them highlighting biological applications and the use of R. For more details please visit <http://www.rbras.org.br/rbras58/>.

We look forward to seeing you in Campina Grande, Paraíba in July 2013.

**Luzia Trinca**

## British and Irish Region (BIR)

### 4th Channel Network Conference and 32nd Fisher Memorial Lecture

The British and Irish Region will be hosting the 4th Channel Network Conference from 3 - 5 July 2013 at the University of St Andrews. The confirmed keynote speaker is Geert Verbeke and three invited sessions will be held on Statistical Ecology (David Borchers, Eleni Matechou and Jerome Dupuis), Advances in Genomics (Mark van de Wiel, Hae Won Uh and Hongzhe Li) and Mixed Modelling (Simon Wood, Ingelin Steinsland and Adeline Samson). The meeting also will host the Fisher Memorial Lecture of Prof David Spiegelhalter. Two ½ day pre-conference workshops will be held on Parameter Redundancy (Diana Cole) and Current Methods in Mixed Modelling (Peter Diggle). For further details, including how to submit an abstract, please visit: <http://bir.biometricsociety.org/events/channel-networkconference>.

### Regional Committee Update

Professor Simon Thompson (University of Cambridge) became the new President of the Region for 2013 - 2014. Simon Thompson is Director of Research in Biostatistics in the Cardiovascular Epidemiology Unit within the Department of Public Health and Primary Care. He is a Fellow of the Academy of Medical Sciences, and a Fellow of Wolfson College Cambridge. From 2000 - 2011 he was Director of the MRC Biostatistics Unit in Cambridge, an internationally acclaimed research institute in medical statistics. He held

previous academic appointments at the London School of Hygiene and Tropical Medicine (LSHTM), and as the first Professor of Medical Statistics and Epidemiology at Imperial College London.

John Hinde (National University of Ireland, Galway) has become outgoing Vice-President for 2013, and is also President-Elect for the International Society. Richard Emsley (University of Manchester) and Sara Geneletti (London School of Economics) have completed their 3-year terms on the Regional committee; Rhian Daniel (LSHTM) and Michael Sweeting (MRC Biostatistics Unit) have been elected to the committee for 2013-2016.

A reminder to all members that the new Regional website contains information about all these forthcoming meetings, as well as presentations from past events and the latest Regional news, including updates from the Society of Biology. For more details please visit <http://bir.biometricsociety.org/>.

**Richard Emsley**

## Eastern North American Region (ENAR)

### ENAR Officers

ENAR is pleased to announce the election of the following officers: President Elect: DuBois Bowman; Secretary: Brent Coull; and Regional Committee (RECOM) Members (2013-2015): Sudipto Banerjee, Jeff Morris, and Dionne Price. These officers will join President: Daniel Heitjan; Past President: Karen Bandeen-Roche; Treasurer: José Pinheiro; and Regional Advisory Board (RAB) Chair: Renee Moore on the Executive Committee.

The ENAR membership expresses heartfelt appreciation to all candidates. We are fortunate to have many outstanding members willing to commit time and energy to serve the profession and organization. Please join us in congratulating our newly-elected officers. Amy Herring, 2012 ENAR Past President, chaired the Nominations Committee. We are extremely grateful to the committee for assembling an excellent ballot.

### 2013 ENAR Spring Meeting 10 - 13 March 2013 in Orlando, FL, USA

The 2013 ENAR Spring Meeting was held at the Orlando World Center Marriott Resort. Orlando is one of the world's most popular vacation destinations, with outstanding attractions all around town! There was fun to be had right outside your door - the Orlando World Center Marriott is a true resort, featuring numerous restaurants, coffee shops and night spots; six swimming pools; a children's activity center; a stunning array of fitness and sports facilities; a spa; a beautiful 18-hole golf course; and easy access to theme parks galore! As in the past, the ENAR Spring Meeting offered a Tuesday evening social event. However, we broke with tradition this year by inviting all conference registrants to attend at no additional charge - a ticket to EPCOT® was provided, including transportation to the park. Those who wished to spend the evening networking had an opportunity to register for a buffet dinner at the park. The evening culminated with the regular nightly fireworks display, which provided an outstanding way to celebrate the success of the Spring Meeting. Special thanks to Ji-Hyun Lee, the Local Arrangements Chair, and to all who volunteered to help make sure our visit to Orlando was a success!

The scientific program once again covered a wide variety of topics, with much to appeal to all, including clinical trials design; methods for imaging data; reproducible research tools; statistical genetics and methods for genetic epidemiology; and many applications of Bayesian methods, to name a few. We are delighted that the Presidential Invited Address was delivered by Professor Jeremy M.G. Taylor of the University of Michigan. Dr. Taylor is a Fellow of the ASA (1996), an elected member of the ISI (2011), and a former chair (2008) of the ASA Biometrics Section. Dr. Taylor has published extensively in HIV science and in cancer research, and spoke about "Modeling Data in a Scientific Context." Three full-day and four half-day short courses were offered, as well as seven tutorials and eleven roundtable luncheons. Other activities included a Junior Researchers Workshop, a Diversity Workshop, and special activities for students. Career placement services took place during the conference. Please join us in thanking the 2013 Program Chair Sarah Ratcliffe, Associate Chair Rhonda Szczesniak, and the entire 2013 Program Committee. Information about the 2013 ENAR Spring Meeting is posted on the ENAR website, <http://www.enar.org/meetings.cfm>.

### **2013 Joint Statistical Meetings (JSM) in Montréal, Québec, Canada, 3 – 8 August 2013**

The 2013 JSM will be held 3 – 8 August at the Palais des congrés de Montréal. The theme of the meeting is "Celebrating the International Year of Statistics". The ENAR representative to the 2013 JSM Program is Melanie Wall ([wallmel@pi.cpmc.columbia.edu](mailto:wallmel@pi.cpmc.columbia.edu)). For more details please visit <http://www.amstat.org/meetings/jsm/2013/index.cfm>.

### **2014 ENAR Spring Meeting in Baltimore, MD, USA, 16 – 19 March 2014**

The 2014 ENAR Spring Meeting will convene at the Baltimore Marriott Waterfront Hotel from 16 – 19 March 2014. The Program Chair is Hernando Ombao ([hombao@uci.edu](mailto:hombao@uci.edu)) and Associate Chair is Qi Long ([qlong@emory.edu](mailto:qlong@emory.edu)). The Local Arrangements Chair is Ciprian Crainiceanu ([crainic@jhsp.hhs.edu](mailto:crainic@jhsp.hhs.edu)). Please contact Hernando and Qi with your proposals for invited sessions. Send your suggestions or proposals for continuing education events (short courses, tutorials and roundtable luncheons) to the 2014 ENAR President DuBois Bowman ([dbowma3@emory.edu](mailto:dbowma3@emory.edu)).

### **2014 JSM in Boston, MA, USA, 2– 7 August 2014**

The 2014 JSM will convene at the Boston Convention and Exhibition Center from 2 – 7 August 2014. Please contact Doug Schaubel ([deschau@umich.edu](mailto:deschau@umich.edu)), our representative to the 2014 JSM Program Committee, with your proposals for invited sessions.

### **2015 ENAR Spring Meeting in Miami, FL, USA, 15 – 18 March 2015**

The 2015 ENAR Spring Meeting will convene at the Hyatt Regency Miami from 15 – 18 March 2015.

**Leslie McClure**

## **German Region (DR)**

### **Education for Statistics in Practice**

In 2010 the German Region of the IBS started a series of lectures called 'Education for Statistics in Practice'. The aim was to implement continuing education for researchers at all stages of their career. To reach a broad audience we integrated the series into the main program of the German Region's annual meetings, as part of the regular conference (not a pre or post conference workshop).

The 4<sup>th</sup> lecture in the Education for Statistics in Practice series took place at the DAGStat meeting in Freiburg 16 - 17 March 2013 (<http://dagstat2013.uni-freiburg.de>). From the beginning, the Education for Statistics in Practice series has been a great success and has been extremely well received. Based on our excellent experiences we will continue to expand the series.

Topics of the lectures were "Handling of Missing Data" by James Carpenter (London, UK) in Dortmund 2010, "Multiple-treatments Meta-analysis" by Georgia Salanti (Ioannina, Greece) at the Joint meeting of the ROES and the German Region in Zurich, Switzerland, 2011, and "Analysis of survival data with the Cox model, and beyond" by Per Kragh Andersen (Copenhagen, Denmark) in Berlin 2012. "Meta-analysis of individual participant data from observational studies" by Simon Thompson (Cambridge, UK) was presented in Freiburg 2013.

More information is available at <http://www.biometrische-gesellschaft.de/arbeitsgruppen/weiterbildung/education-for-statistics-in-practice.html>

### **Working Group (WG) Activities**

**WG "Non-Parametric Methods"**. The workshop "Applied Resampling Methods with biometric applications", organised by Frank Konietzschke (Goettingen) and Markus Pauly (Duesseldorf) was held 6 – 7 December 2012 and was well attended with 34 participants from Germany and Austria. The workshop was a nice blend of researchers with various statistical backgrounds from application to theory. The talks covered a broad spectrum on resampling methods. Eleven talks were given during the two days, including 4 extended talks from the invited speakers: Jan Beyersmann (Freiburg and Ulm), Anne Laure Boulesteix (Munich), Thorsten Dickhaus (Berlin) and Arnold Janssen (Duesseldorf). Moreover, the 3 young scientists Thomas Asendorf, Benjamin Becker (both Goettingen) and Marsel Scheer (Duesseldorf) had the opportunity to present their work. Other speakers were Arne Bathke (Salzburg), Frank Konietzschke (Goettingen), Markus Paly (Duesseldorf) and Karl Schlag (Wien). Throughout, much time was spent for long and lively discussions. The combination of applied researchers together with colleagues from mathematical statistics was very stimulating and successful. The workshop was a great success and a lot of new scientific contacts were formed that will initiate quite a number of collaborations.

**WG "Spatial Statistics"**. From 11 - 13 October 2012 the working group held their autumn meeting "6. Humboldtsteiner Tage" in Remagen, Germany, with 35 participants, 23 presentations and 2 posters. Invited speaker Olivier le Polain (London) gave a lecture on "Spatial clustering of gonorrhoea in London and its association with socio-demographic risk factors: A Bayesian spatial modelling approach".

**WG "Further Education"**. The working group organized a seminar on "Model building for high dimensional data" (lecturer Harald



Binder, Mainz) in Berlin on 18 - 19 October 2012. The topics covered included unsupervised procedures and univariate approaches, techniques for regularized estimation of regression models, model selection and evaluation (prediction ability and stability).

**WG "Teaching and Didactics of Biometry".** By reason of the International Year of Statistics the working group promised to bring statistics to schools: <http://www.gmds.de/fachbereiche/biometrie/Statistik/statistik2013.php> als Unterricht und als Berufsberatung.

In the International Year of Statistics, the working group sponsors the first prize for teaching material. The winner gets 200 €. It is intended to publish all contributions received until 1 October 2013 in one volume with electronic appendix. Jury Members Rainer Muche (Ulm), Geraldine Rauch (Heidelberg), Reinhard Vonthein (Lübeck), give further directions (in German) on <http://www.biometrische-gesellschaft.de/arbeitsgruppen/lehre-und-didaktik-der-biometrie.html>

**Axel Benner**

## Japanese Region (JR)

### The 2013 Annual Meeting of the Biometric Society of Japan 23 - 24 May

The 2013 Annual Meeting of the Biometric Society of Japan will be held on 23 - 24 May 2013 at Paruse Izaka in Fukushima prefecture, Japan. The special lecture will be presented by Prof. Uesaka (Osaka University), who is the winner of the Biometric Society of Japan Award 2013 for Outstanding Scientific Contribution. An invited session on missing data in clinical trials will be held. Recent reports on missing data in clinical trials published by National Research Council (USA) and European Medicines Agency (EU) also will have impacts on clinical trials conducted in Japan. In this session, lessons learned from actual clinical trials in Japan and in US will be shared, and discussions will be held on how to handle missing data in practice. Several contributed sessions will be organized. The Biometric Society of Japan and Japanese Society of Applied Statistics will jointly organize a special session on an up-to-date topic "Big Data". Two presentations on "Big Data" issues in medical science will be made. The two societies also organize lectures for civic education. Prof. Kawasaki, who is the President of the Japanese Society of Applied Statistics, will give a lecture on earthquake disasters and statistics. Prof. Ohashi, the President of the Biometric Society of Japan, will make his presentation on epidemiology and cancer prevention.

### The 2013 Japanese Joint Statistical Meeting 8 - 11, September

The Biometric Society of Japan is one of the six sponsoring organizations of the meeting, and the 2013 Japanese Joint Statistical Meeting will be held on 8 - 11 September 2013 \*\*reconcile with meetings listing in back\*\* at Osaka University in Toyonaka, Japan. The Biometric Society of Japan will organize an invited session on statistical education in medical schools. We will also have the lectures by winners of the Young Biostatisticians Award presented by the Biometric Society of Japan.

**Satoshi Hattori**

## Pakistan Region (PKSTAN)

### Formation of IBS Pakistan Region

The idea of involving Pakistan as a region was first discussed between Dr. Weng K. Wong and Dr. Alia Sajjad in Cambridge at Isaac Newton Institute for Mathematical Sciences during Design and Analysis of Experiments Program 2011. It was materialized in October 2012 and we are happy to inform the IBS community that IBS group Pakistan Region has been formed in November 2012. Dr. Muhammad Aslam, Professor and former Chairman Department of Statistics Quaid-i-Azam University Islamabad is working as the president.

**Alia Sajjad**

## Western North American Region (WNAR)

### 2013 WNAR Election Results

Congratulations to Dr. Elizabeth Brown from the Fred Hutchinson Cancer Research Center in Seattle WA, WNAR President-Elect; Dr. Mary Redman from the Fred Hutchinson Cancer Research Center in Seattle WA, WNAR Treasurer; and Drs. Damla Senturk from University of California Los Angeles and Hernando Ombao from University of California Irvine, WNAR Regional Committee members. Special thanks go out to Dr. Daniel Gillen, WNAR Past-President; Dr. Weng Kee Wong, WNAR Program Coordinator; and Drs. Andrea Cook and John Boscardin, outgoing Regional Committee members, for their efforts and dedication to WNAR. We would like to thank all the WNAR members who volunteered to be candidates for these offices. WNAR is fortunate to have so many talented members willing to dedicate their time and energy to WNAR, which makes each election a choice among outstanding individuals.

### 2013 WNAR Spring Meeting 16 - 19 June

The 2013 WNAR/IMS spring meeting will be held 16-19, June, 2013 on the campus of the University of California, Los Angeles. Los Angeles is the largest city in California and the second most populous city in the US after New York City. The city is a leader in entertainment, culture, media, fashion, science, and sports. The local organizer is Kate Crespie. Details about the meeting will be posted on the WNAR web page [www.wnar.org](http://www.wnar.org) as they become available.

### 2013 WNAR Student Paper Competition

As a reminder, WNAR sponsors students who enter the student paper competition. All entrants receive their registration fees and banquet dinner ticket for free. Monetary prizes will be awarded to the best papers in written and oral competitions. Information on the 2013 WNAR Student Paper Competition, registration information and program details for the meeting will be posted as they become available: <http://www.wnar.org>. We look forward to seeing you there.

**Megan Othus**

## Announcements and News



### IBS is Now on LinkedIn – Join our Group and Get Connected to Colleagues Across the Globe

IBS has created a LinkedIn Group for biometrics industry professionals to become a part of. Network with your colleagues instantaneously! Post discussions to the Group and get comments/feedback from group members on their perspectives or experiences. A great benefit of this Group is that it's a very easy and free way to communicate with your colleagues who live all over world. Being connected to the IBS Group will allow you to see other connection possibilities as well and broaden your professional network. The possibilities are endless. Join our Group today by visiting [www.linkedin.com](http://www.linkedin.com) and search under Groups for "International Biometric Society".

### Nominations for 2013 Mortimer Spiegelman Award Due 1 April 2013

The Applied Public Health Statistics (formerly "Statistics") Section of the American Public Health Association (APHA) invites nominations for the 2013 Mortimer Spiegelman Award to honor a statistician, 40 years of age or younger, who has made outstanding contributions to health statistics, especially public health statistics. The award was established in 1970 and is presented annually at the APHA meeting. The award serves three purposes: to honor the outstanding achievements of both the recipient and Spiegelman, to encourage further involvement in public health of the finest young statisticians, and to increase awareness of APHA and the Applied Public Health Statistics Section in the academic statistical community. More details about the award, including the list of the past recipients and more information about the Applied Public Health Statistics Section of APHA, may be found at <http://www.apha.org/memberships/sections/aphasections/stats/about/spiegelman.htm>. To be eligible for the 2013 Spiegelman Award, a candidate must have been born in 1973 or later. Please send electronic versions of nominating letter and the candidate's CV to the 2013 Spiegelman Award Committee Chair, Nilanjan Chatterjee ([chattern@mail.nih.gov](mailto:chattern@mail.nih.gov)). Please state in the nominating letter the candidate's birthday. The nominator should include one to two paragraphs in the nominating letter that describe how the nominee's contributions relate to public health concerns. A maximum of three supporting letters per nomination can be provided. Nominations for the 2013 Award must be submitted by 1 April 2013.

### IBC 2014 Critical Dates

16 September 2013	Call for submission of contributed paper
16 December 2013	Deadline for submission of contributed paper
8 January 2014	Early bird registration opens
3 March 2014	Notification of acceptance of contributed paper
31 March 2014	Deadline for early bird registration
5 April 2014	Deadline for notification of cancellation with full refund

### IBS thanks past *Biometric Bulletin* correspondents and welcomes recently appointed correspondents too

Sally Galbraith replacing Duncan Hedderley (*Australasian Region*)  
Axel Benner replacing Johannes Hussing (*German Region*)  
Leslie McClure replacing Dionne Price (*Eastern North American Region*)  
Cecilia Bruno replacing Marta Zanelli (*Argentinean Region*)  
Novie Younger replacing Bruce Lauckner (*Central American-Caribbean Region*)  
Anabel Forte replacing Nuria Porta (*Spanish Region*)  
Megan Othus replacing Antje Othus (*Western North American Region*)  
Jialiing Li (*Singapore*)  
Dan Kajungu (*Group Uganda*)  
Agnes Ankomah (*Group Ghana*)  
John Mwangi (*Group Kenya*)  
Njoku Ama (*Group Botswana*)  
Innocent Zebaze (*Group Cameroon*)  
Cristian Meza (*Group Chile*)  
Katja Ickstadt (*Central European Network*)  
Alia Sajjad (*Pakistan*)  
Andrew Zhou (*China*)



### Deadline for 2013 IBS Membership Renewal: 1 May 2013

The deadline for 2013 IBS Membership renewal is 1 May 2013. IBS membership runs on a calendar year basis from 1 January – 31 December every year. For further information and to renew your membership for 2013 please visit <http://www.biometricsociety.org/membership/renew-membership/>. As you know, IBS membership has great value and benefits including free online access to prestigious journals including *Biometrics* and *The Journal of Agricultural, Biological, and Environmental Statistics*, free online access to our monthly publication *Biometric Bulletin*, discounted registration fees for the International Biometric Conferences, access to all active members' contact information through our online membership directory, networking opportunities with access to more than 6,000 biostatisticians from around the world, and much more. Renew your membership today!

## University of California, Department of Statistics

### **Assistant/Associate Professor in Statistics**

Applications and nominations are invited for the tenure-track position of Assistant/Associate Professor of Statistics in the Department of Statistics at the University of California, Riverside. The position targets candidates with high quality research and strong teaching records, and general training in statistics or biostatistics with expertise preferably in more than one of the following areas: Statistical Methodology for Clinical Trials, Survival Analysis, Discrete Data Analysis, Large Scale Data Analysis, Nonparametric Statistics, Image Analysis, and Spatial Statistics. Qualified candidates must have a Ph.D. in Statistics or Biostatistics or a similar statistically oriented discipline. The position is effective July 1, 2013.

The University of California at Riverside has started a new Medical School with its first incoming class of students expected in the Fall of 2013. The Department of Statistics will be part of an exceptional environment for interdisciplinary research with the new Medical School and other health related initiatives on campus. Candidates with a research profile for developing theory and methods of statistics that are motivated by biomedical collaborations are highly desirable.

Reviews for the position begin immediately, and will continue until the position is filled. Interested applicants should send a letter describing how their qualifications and interests would fit with the position description along with their curriculum vitae to the search committee chair. Applicants should arrange for three letters of recommendation to be sent to Tiffany as well. Until the file is complete with the requested information, the application cannot be given full consideration.

University of California, Riverside  
900 University Avenue, Boyce Hall  
Riverside, CA 92521-0138  
Attn: Tiffany Lindsey, BNPPS  
Tiffany.lindsey@ucr.edu

The University of California is an Affirmative Action/Equal Opportunity Employer. Members of underrepresented groups are particularly encouraged to apply. [http://affirmativeaction.ucr.edu/forms/eeo\\_survey.html](http://affirmativeaction.ucr.edu/forms/eeo_survey.html) The University has family-friendly policies and is committed to accommodating the needs of dual career couples.

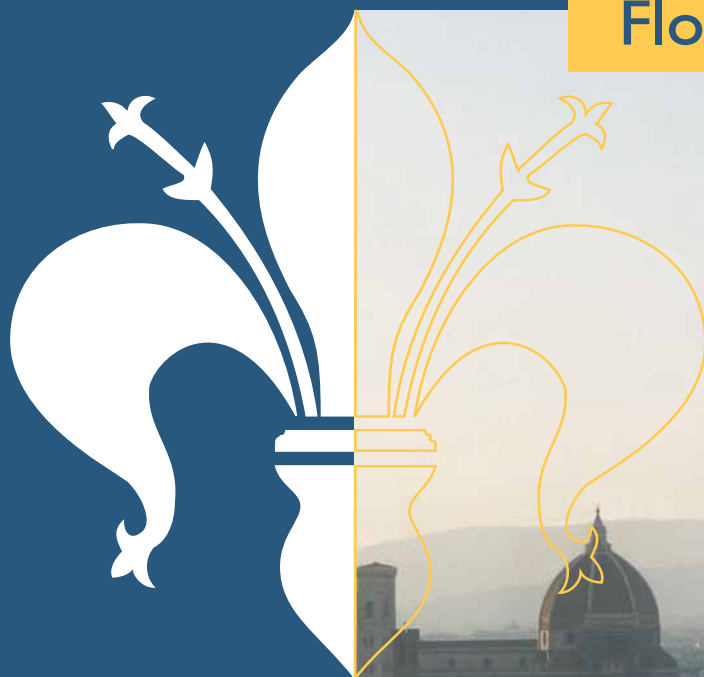
# XXVII

# International Biometric Conference



organized by the Biometric Society of Italy, Italian Region of the International Biometric Society

## Florence, July 6 -11.2014



### ABOUT FLORENCE

Whether yours is a visit that allows for sightseeing or not you will not fail to succumb to the timeless beauty of this city.

Known as the city of art, Florence has a wealth of traditional craft workers producing some of the finest products including leather craft, gold craft, knitwear, furniture and antiques. The famous designer shopping street is Via Tornabuoni and glancing across the shop windows you will find some of the most prestigious Italian designer names.

### ACCESS TO FLORENCE

Florence is served by two main airports, Pisa Airport and the city airport of Peretola just 4 kilometres outside of the city centre.

There is direct rail link from Pisa airport to Florence, a 40 minute train journey, and the central station of 'Santa Maria Novella' links Florence by rail directly to all the main cities in Italy (Rome 280 Km - Milan 320 Km) and throughout Europe.

### ABOUT CONFERENCE VENUES

An exclusive area in one of the most beautiful places in the world - this is what the Firenze Fiera Congress & Exhibition Center offers to those who organise exhibitions and congresses, as well as to the event attendees.

The over 100,000 square metres available inside our center are actually located in the heart of Florence, between the city historic centre and the boulevards, major traffic arteries built over the lay-out of the ancient city walls.

### CONFERENCE ORGANIZATION

Organizing President

*Clarice Garcia Borges Demétrio*, Universidade de São Paulo, Brasil

International Programme Committee Chair

*Brian Cullis*, University of Wollongong, Australia

Local Organizing Committee Chair

*Adriano Decarli*, University of Milan, Italy

### SCIENTIFIC PROGRAMME

- Pre-conference short courses
- Opening ceremony and IBS presedential address Full programme of invited oral
- Sessions Contributed oral and poster sessions
- Satellite Meetings

### SOCIAL PROGRAMMES

- Sunday 6 - Welcome gathering at Firenze Fiera Congress Center
- Monday 7 - Reception in Florence City Hall
- Tuesday 8 - Optional evening social activities
- Wednesday 9 - Social excursion
- Thursday 10 - Conference Dinner

### ORGANIZING SECRETARIAT

FASI S.r.l.

Via R. Venuti 73 - 00162 Roma

Tel: +39 06.97605610 | Fax: +39 06.97605650

inPo@Fasiweb.com | www.Fasiweb.com



For further information: [www.ibs-italy.info](http://www.ibs-italy.info)

## STATISTICS / QUANTITATIVE GENETICS / ANALYSIS CONNECT: PHD SCHOLARSHIP

The National Institute for Applied Statistics Research Australia (NIASRA) at the University of Wollongong (UOW) is a vibrant and growing research centre, comprising 17 academic statisticians, including four professors and over 20 PhD students.

We are offering a full-time PhD scholarship in the area of statistical quantitative genetics, which aims to develop appropriate models for the analysis of multi-environment/multi-trait data-set, in order to predict both additive and total (in the case of clones) breeding values. The successful student will also develop skills in the development and implementation of innovative statistical methodology, extensive use of simulations and analysis of real data.

The successful applicant will work with UOW's Professor Brian Cullis, Dr Paul Jefferson at Radiata Pine Breeding Company (RPBC) and Professor Robin Thompson at Queen Mary College London. The scholarship, which is being funded by RPBC, includes a stipend that is currently worth approximately \$AUD35,000 per year for three years.

Additional funds will be available to visit the RPBC in New Zealand, as well as provision of suitable computing hardware and operating funds. There may also be opportunity for overseas travel to collaborate with researchers in the UK.

Applications are open to both domestic and international applicants. To be considered you should have an Honours Class 1 degree in Statistics (or an equivalent qualification), strong research potential and be able to commence by the end of June 2013 (pending visa requirements).

Applications must include an up-to-date resume, a covering letter stating what you will bring to this role and copies of transcripts.

**Email your application to Rhondalee Cambareri at [rc@uow.edu.au](mailto:rc@uow.edu.au) by 22 April 2013.**

**For more information about the project, contact Professor Brian Cullis on [bcullis@uow.edu.au](mailto:bcullis@uow.edu.au)**



# MEETINGS

## 2013

### **NEW 11 – 12 April**

**Workshop on Joint Models for Longitudinal and Survival Data**

Macquarie Park Executive Conference Centre,  
Macquarie University

<http://www.statsoc.org.au/CPD44MainPage>

### **22 – 25 April**

**7th EMR-IBS Meeting**

Crowne Plaza Hotel, Tel-Aviv, Israel

<http://event.pwizard.com/ims/>

### **22 – 24 May**

**14th Spanish Conference Biometry**

Ciudad Real (Castilla La-Mancha)

<http://areaestadistica.uclm.es/biometria2013>

### **NEW 23 – 24 May**

**The 2013 Annual Meetings of the Biometric Society of Japan**

Paruse Iizaka, Fukushima, Japan

### **2 – 5 June**

**49th Summer Regional Council on Statistics (SRCOS)**

**Summer Research Conference**

Montgomery Bell State Park

Nashville, TN, USA

Hosted by the Department of Bioinformatics and Biostatistics

University of Louisville

<http://louisville.edu/sphis/bb/srcos-2013>

### **10 – 12 June**

**4th Nordic-Baltic Biometric Conference, NBBC13**

Hosted by Karolinska Institutet in Stockholm, Sweden

<http://nbbc13.org/>

### **16 – 19 June**

**WNAR Spring Meeting**

University of California, Los Angeles, CA, USA

<http://www.wnar.org>

### **NEW 23 – 26 June**

**Working Group “Statistical Computing”**

**Workshop “Statistical Computing 2013”, Reisenburg Castle, Germany**

### **NEW 27 – 28 June**

**Working Group “Agricultural Field Trials”**

Summer meeting in Bad Salzflen, Germany

### **3 – 5 July**

**Channel Network Conference**

St. Andrews

<http://bir.biometricsociety.org/>

### **NEW 11 – 12 July**

**Symposium: New Opportunities at the Interface between Ecology and Statistics**

**ECO\_Stats group at the University of New South Wales**

<http://www.eco-stats.unsw.edu.au/symposium.html>

### **22 – 26 July**

**2013 RBras Meeting**

**Joint with the 15th Symposium of Statistics Applied to Agricultural Sciences (SEAGRO)**

Campina Grande, Pariba (northeast Brazil)

<http://www.rbras.org.br/>

### **3 – 8 August**

**Joint Statistical Meetings (JSM)**

Palais des congrès de Montréal

Montréal, Québec, Canada

<http://www.amstat.org>

### **9 – 12 September**

**Seminar of the Austro-Swiss Region of the IBS**

Dornbirn, Austria

[www.roes20xx.at](http://www.roes20xx.at)

### **NEW 8 – 12 September**

**\*\*verify whether this is 8-11 (per correspondent) or 9-12 (per draft); edit JR news if true dates are 9-12\*\***

**The 2013 Japanese Joint Statistical Meeting**

Osaka University, Toyonaka, Japan

### **NEW 24 – 26 September**

**International Conference on Simultaneous Inference**

Leibniz University Hannover, Hannover, Germany

<http://icsi.biostat.uni-hannover.de/>

# MEETINGS (CONTINUED)

**9 – 11 October**

*10th International Conference on Health Policy Statistics (ICHPS)*

*Statistically Engaged Health Care Policy*

*Palmer House Hilton Hotel*

*Chicago, IL, USA*

<http://www.amstat.org/meetings/ichps/2013>

**NEW 20 – 22 October**

*Australian Epidemiological Association Conference*

*Brisbane Convention and Exhibition Centre,*

*Queensland*

[www.AEA2013.com](http://www.AEA2013.com)

**NEW 25 November**

*Joint Conference of the New Zealand Statistical Association and the Operations Research Society of New Zealand*

*University of Waikato*

[www.stats.org.nz](http://www.stats.org.nz)

**1 – 5 December**

*IBS-Australasian Regional Meeting*

*“Biometrics by the Canals”*

*Sebel Mandurah Hotel*

*City of Mandurah (near Perth), Australia*

<http://www.BiometricSociety.org.au>

**28 – 31 December**

*Statistics 2013: Socio-Economic and Sustainable Challenges and Solutions*

*CRRAO AIMSCS, Hyderabad*

*India*

## 2014

**16 – 19 March**

*2014 ENAR Spring Meeting*

*Baltimore Marriott Waterfront Hotel*

*Baltimore, MD, USA*

<http://www.enar.org>

**6 – 11 July**

*XXVIIth International Biometric Conference*

*Firenze Fiera Congress & Exhibition Center*

*Florence, Italy*

<http://www.ibs-italy.info>

**2 – 7 August**

*Joint Statistical Meetings (JSM)*

*Boston Convention and Exhibition Center*

*Boston, MA, USA*

<http://www.amstat.org>